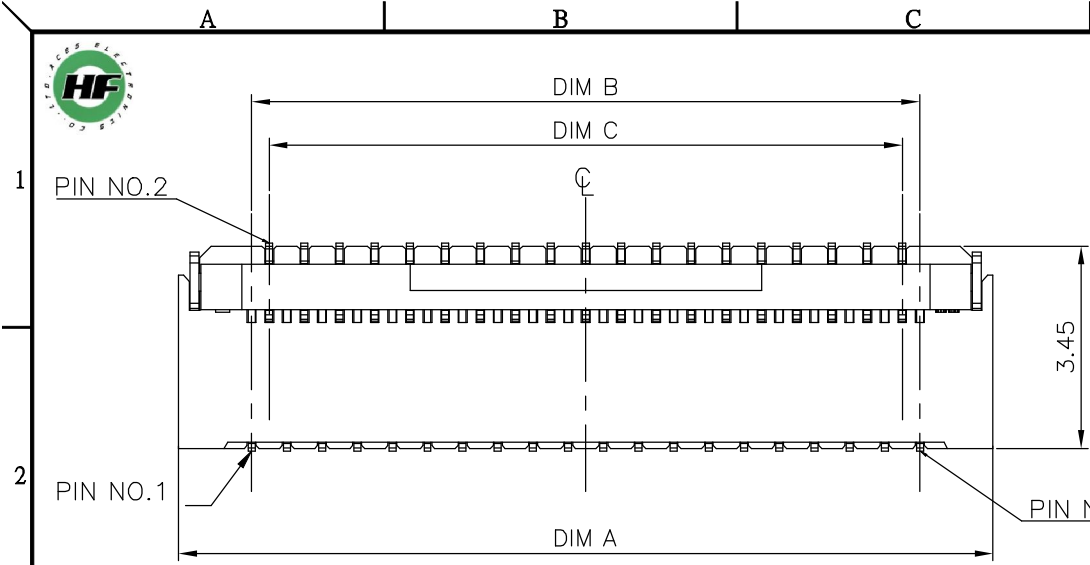
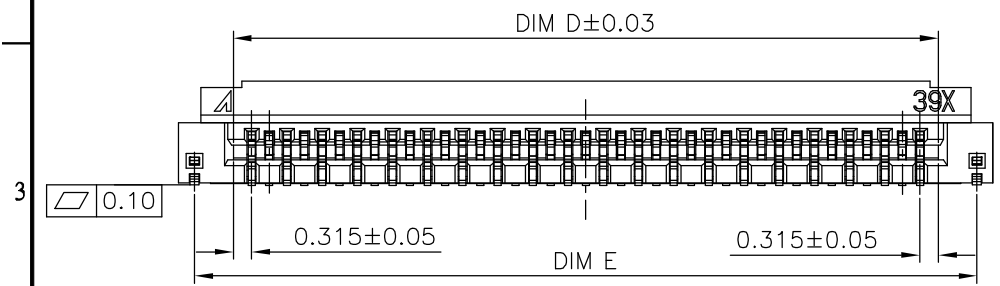




ODD CKT TYPE



- NOTES:
- MATERIAL:
 - HOUSING: LCP.UL94 V-0; COLOR:NATURAL.
 - ACTUATOR: PA46.UL94 V-HB OR UL94 V-0; COLOR:BLACK.
 - CONTACT: C5210-SH
 - FITTING NAIL: C2680-H
 - FINISH:
 - CONTACT:
 - M: 50~120u" NICKEL PLATING OVERALL
 - 3u" MIN. GOLD PLATING ON CONTACT AND GOLD FLASH ON SMT
 - FITTING NAIL:
 - 100~200u" MATT TIN PLATING ON SOLDER TAILS(LEAD FREE).
 - 50~100u" NICKEL UNDERPLATING OVERALL.
 - SPEC. PLS. REFER TO PS-51511-XXXXX-001
 - PACKAGE PLS. REFER TO 51511-XXXXX-XX-TRP
 - PART NUMBER



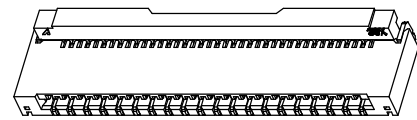
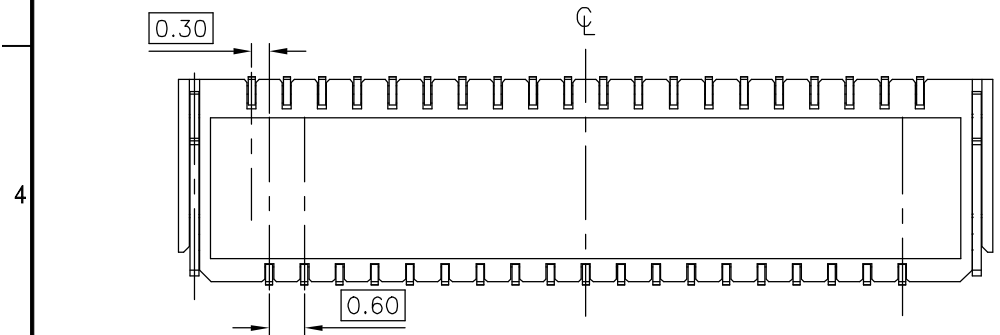
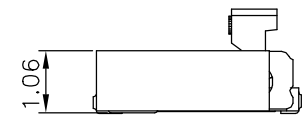
51511-XXX X X -XXX

NO OF CKT
11~45PIN

PACKING
0:TAPE & REEL

XXX	COLOR	ACTUATOR COLOR
001	NATURAL	BLACK (UL94 V-HB)
002	NATURAL	BLACK (UL94 V-0)

PLATING
M:3u" GOLD ON CONTACT AND
SOLDER FOR SELECTIVENESS PLATING



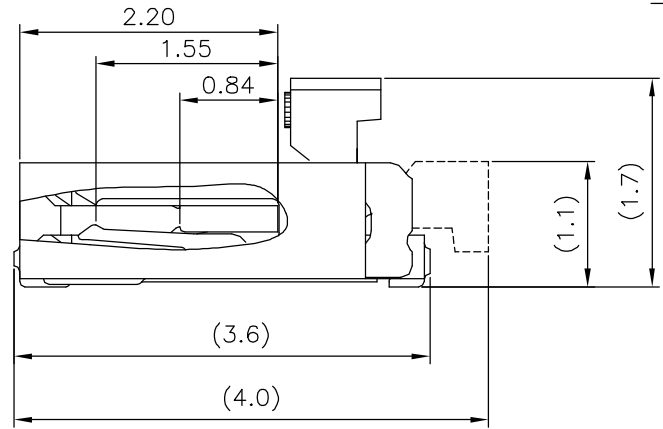
CKT	Dim A	Dim B	Dim C	Dim D	Dim E	Dim F
11	5.50	3.00	2.40	3.63	4.95	3.60
13	6.10	3.60	3.00	4.23	5.55	4.20
15	6.70	4.20	3.60	4.83	6.15	4.80
17	7.30	4.80	4.20	5.43	6.75	5.40
19	7.90	5.40	4.80	6.03	7.35	6.00
21	8.50	6.00	5.40	6.63	7.95	6.60
23	9.10	6.60	6.00	7.23	8.55	7.20
25	9.70	7.20	6.60	7.83	9.15	7.80
27	10.30	7.80	7.20	8.43	9.75	8.40
29	10.90	8.40	7.80	9.03	10.35	9.00
31	11.50	9.00	8.40	9.63	10.95	9.60
33	12.10	9.60	9.00	10.23	11.55	10.20
35	12.70	10.20	9.60	10.83	12.15	10.80
37	13.30	10.80	10.20	11.43	12.75	11.40
39	13.90	11.40	10.80	12.03	13.35	12.00
41	14.50	12.00	11.40	12.63	13.95	12.60
45	15.70	13.20	12.60	13.83	15.15	13.80



QUALITY SYMBOLS MAJOR Ⓜ CRITICAL Ⓢ GENERAL TOLERANCES (UNLESS SPECIFIED) X ±0.5 XX ±0.25 .XX ±0.15 .XXX ±0.1 ANGLES ±2°	DRAWN BY Lei,shanjun 18/07/20	DATE 18/07/20	
	CHECKED BY Lu,Jing Quan 18/07/20	DATE 18/07/20	
	APPROVED BY hsieh,fu yu 18/07/20	DATE 18/07/20	DWG NO. 51511-XXXXX-XXX
	UNITS mm		SIZE A4
	SCALE 1:1	SHEET NO. 1 OF 2	PART NO. SEE NOTES

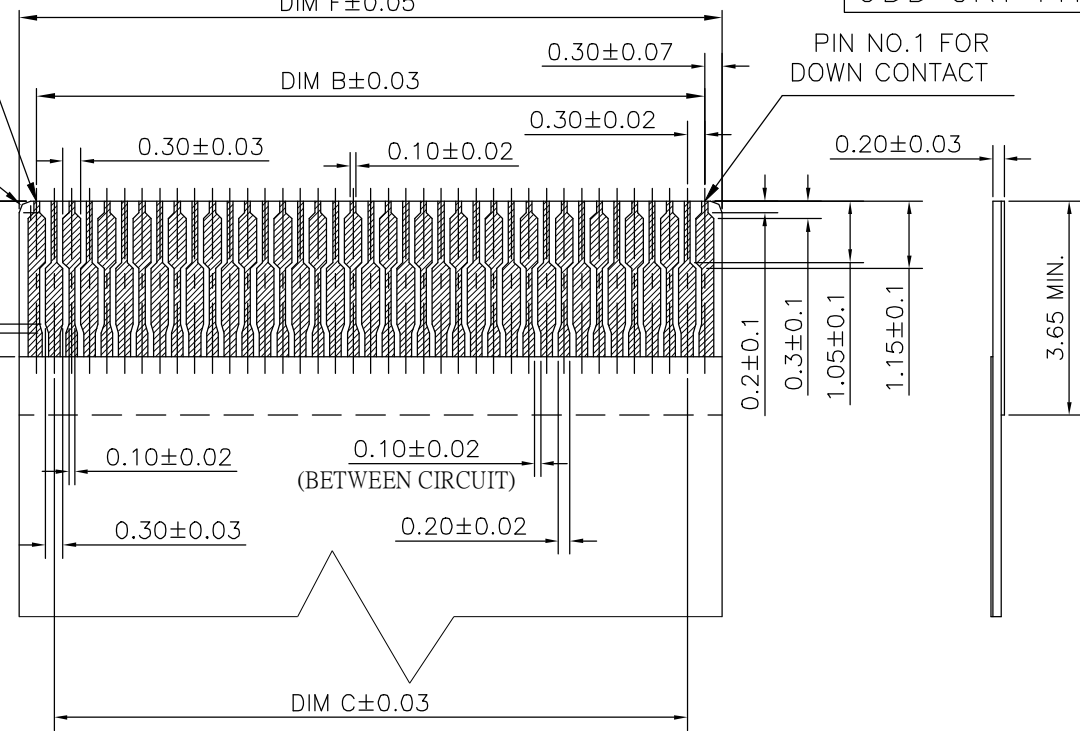


ODD CKT TYPE

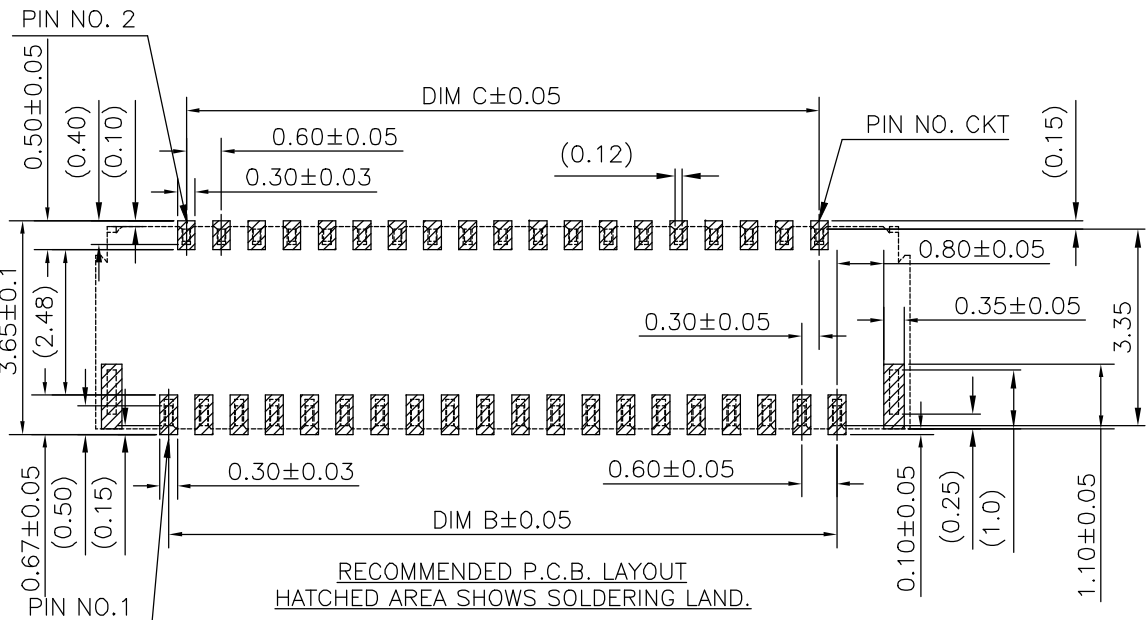


SCALE 2:1

PIN NO. CKT FOR DOWN CONTACT



PIN NO. FOR DOWN CONTACT
APPLICABLE FPC RECOMMENDED DIM
(GENERAL TOLERANCE: ±0.05mm)



QUALITY SYMBOLS MAJOR CRITICAL GENERAL TOLERANCES (UNLESS SPECIFIED) X ±0.5 X ±0.25 .XX ±0.15 .XXX ±0.1 ANGLES ±2°	DRAWN BY Lei,shanjun DATE 18/07/20	 0.3mm PITCH ZIF BACK-FLIP FPC CONN. SMT R/A D/C	
	CHECKED BY Lu,Jing Quan DATE 18/07/20		TITLE
	APPROVED BY hsieh,fu yu DATE 18/07/20		DWG NO. 51511-XXXXX-XXX
	UNITS mm	 SCALE 1:1	SIZE A4 SHEET NO. 2 OF 2